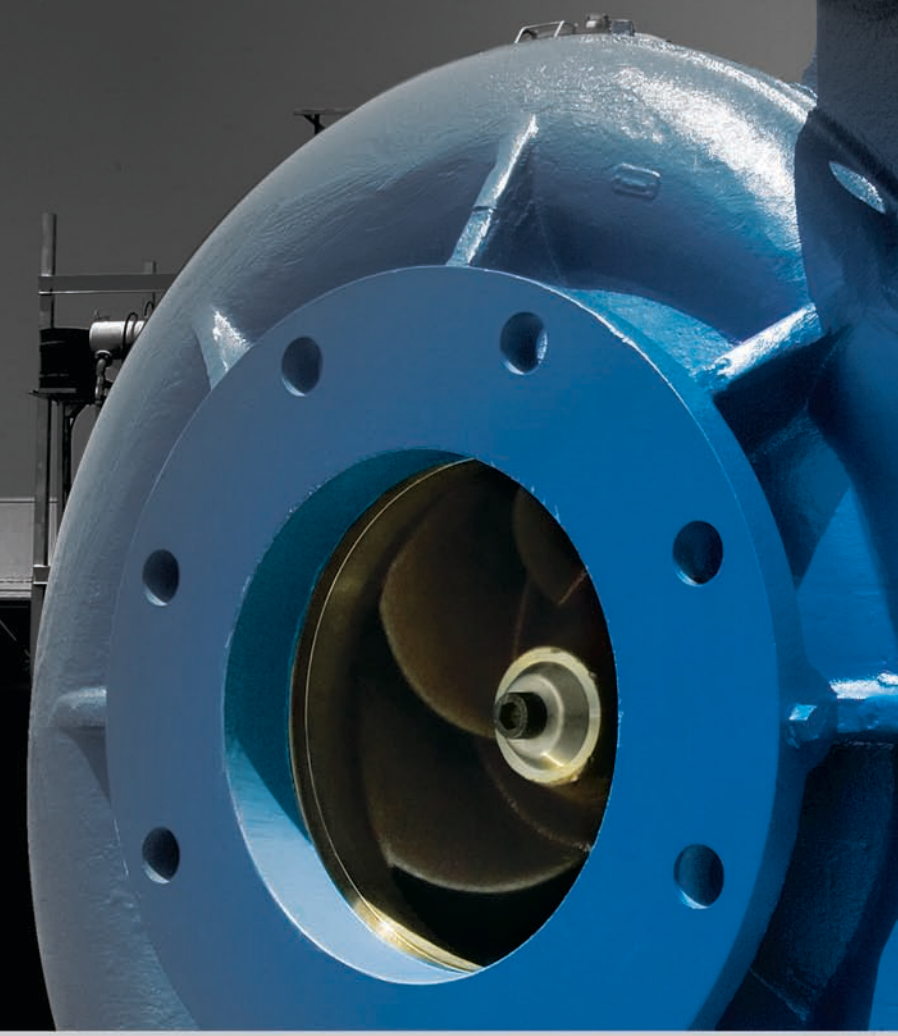




QUALITY · VALUE · DELIVERY



P
U
M
P
S



OUR FACILITY



Located in Grand Terrace, California, Griswold Pump Company is a full featured manufacturing facility providing a broad range of pumps for oil & gas, chemical process, industrial, and municipal applications. Griswold designs, engineers, and manufactures a variety of pumps including ANSI, end suction centrifugal, self-priming, and vertical turbines.



oil and gas



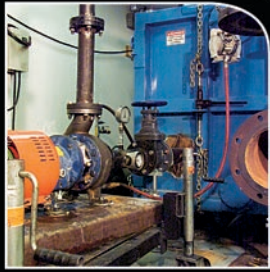
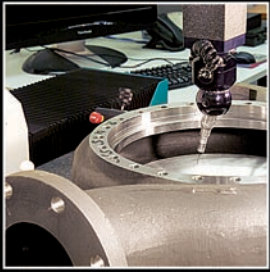
chemical process



industrial

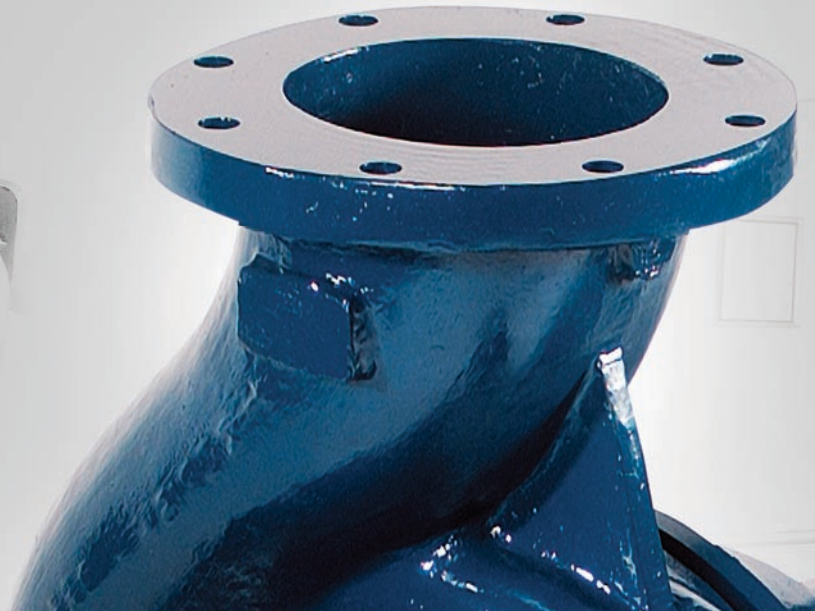


municipal



ENGINEERED PRODUCTS

Griswold is committed to providing a quality engineered product to our customers. Our dedicated engineering department is home to application and design engineers, whose focus is new product development and application support. Our engineering department also houses our state-of-the-art certified testing facility.



INVENTORY

Griswold maintains substantial stock on our most common materials including ductile iron, stainless steel, CD4, and alloy 20 to meet the delivery demands for process pumps. Our quality department ensures that all pumps and parts are manufactured to ensure the highest quality.



Griswold's manufacturing facility is both ISO 9001 and ISO 14000 certified. Our facility includes a clean room for powerframe assembly, CNC production equipment, and computer-aided balancing equipment. Most importantly Griswold has factory personnel who are dedicated to providing quality pumps, some of whom have 20 years experience in Griswold manufacturing.



TRUE QUALITY

E, F & G Series Centrifugal Water Pumps

FEATURES:

- Cast iron volute.
- Bronze fitted with renewable wear ring
- Single piece enclosed impellers
- Component mechanical seals

SPECIALTY OPTIONS:

- Close coupled options
- ANSI Power frame mounted
- NSF Certification for F-series
- Internal coatings available
- Base mounted options

PERFORMANCE DATA:

- Max. flow: 682 m³/h (3,000 gpm)
- Max. delivery pressure: 9.3 bar (134 psig)
- Max. working temperature: 82° C (180° F)

CERTIFICATIONS & ASSOCIATIONS:



811 Series ANSI/ASME Centrifugal Pumps

FEATURES:

- Standard and low flow models available
- Heavy duty power frames
- Fully open impellers with rear adjustment capability
- Wide variety of mechanical seal options

TECHNICAL DATA:

- Ductile iron, 316 stainless steel, CD4MCu, and A-20 materials available
- Max. temperature: 260° C (500° F)
- 3 stuffing box options available
- Multiple port sizes available
- Multiple seal flush plans available
- Steel and composite baseplates available
- Certified testing and material certifications

PERFORMANCE DATA:

- Max. flow: 908 m³/hr (4,000 gpm)

CERTIFICATIONS & ASSOCIATIONS:

ANSI B73.1M
Complies with ANSI B73.1M
specifications



22069 Van Buren St., Grand Terrace, CA 92313

Phone: 229-226-5255 Fax: 229-226-5567

email: griswold@griswoldpump.com www.griswoldpump.com



Your Distributor: